



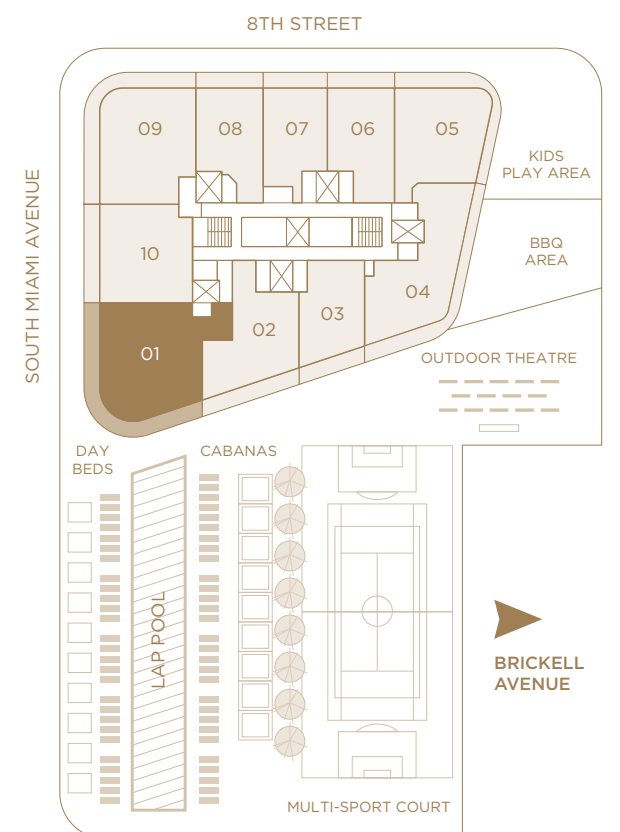
SLS LUX™
BRICKELL



RESIDENCE 01

3 BEDROOMS & DEN / 4 BATHS

A/C INTERIOR AREA	1,753 SQ. FT.	162.85 SQ. M.
TERRACE AREA	503 SQ. FT.	46.73 SQ. M.
TOTAL RESIDENCE	2,256 SQ. FT.	209.58 SQ. M.



There are various methods for calculating the square footage of a Unit and depending on the method of calculation, the quoted square footage of a Unit in advertising materials may vary from the square footage of a Unit as stated or described in the Prospectus and the Declaration. The dimensions in the Unit shown in these floor plans have been calculated from the exterior boundaries of the exterior walls to the centerline of interior demising walls, including common elements such as structural walls and other interior structural components of the building and in fact vary from the dimensions that would be determined by using the description and definition of the "Unit" set forth in the Prospectus and the Declaration. For your reference, the area of the Unit, determined in accordance with the Unit boundaries as defined in the Prospectus and the Declaration are less than the square footage reflected here. The configuration and use of space or the floor plan design may vary from that in the Prospectus and Declaration because the Developer has reserved the right in the Prospectus to make design, dimension, specification, and plan changes at any time, in the Developer's discretion, without notice to Unit buyers. The measurements of room set forth on this floor plan are generally taken at the greatest points of each given room (as if the room were a perfect rectangle) without regard for any cutouts. Accordingly, the area of the actual room will typically smaller than the product obtained by multiplying the stated length times width. All dimensions are approximate and may vary with actual construction, and all floor plans and development plans are subject to change. The furnishings and décor illustrated are not included with the purchase of the Unit. See Prospectus for additional information regarding what is offered with the Unit and the calculation of the Unit square footage and dimensions. Terraces depicted are for illustration only and may not reflect the final terrace design. The Developer reserves the right to modify, without notice, the size, dimension, and configuration of the terraces based upon the final architectural and engineering specifications.



SLS LUX™
BRICKELL

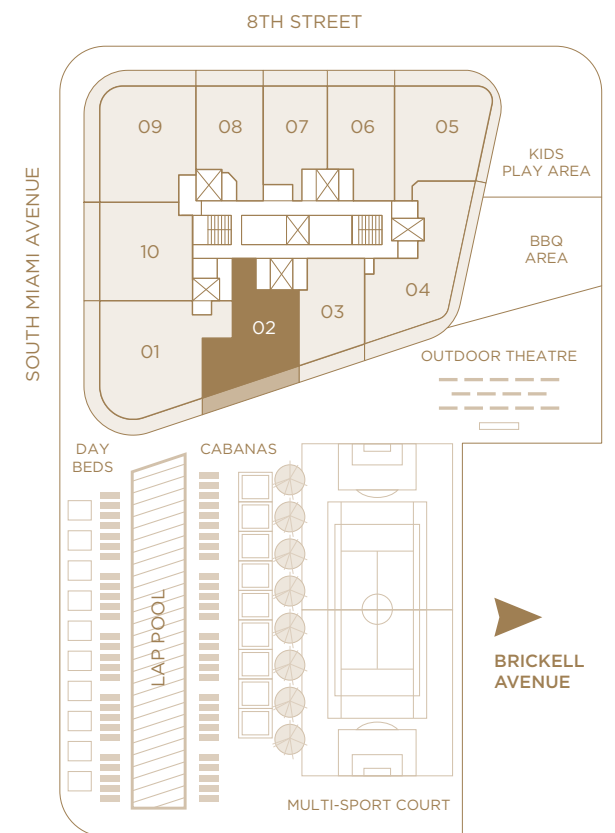


RESIDENCE 02

2 BEDROOMS & DEN / 2 1/2 BATHS

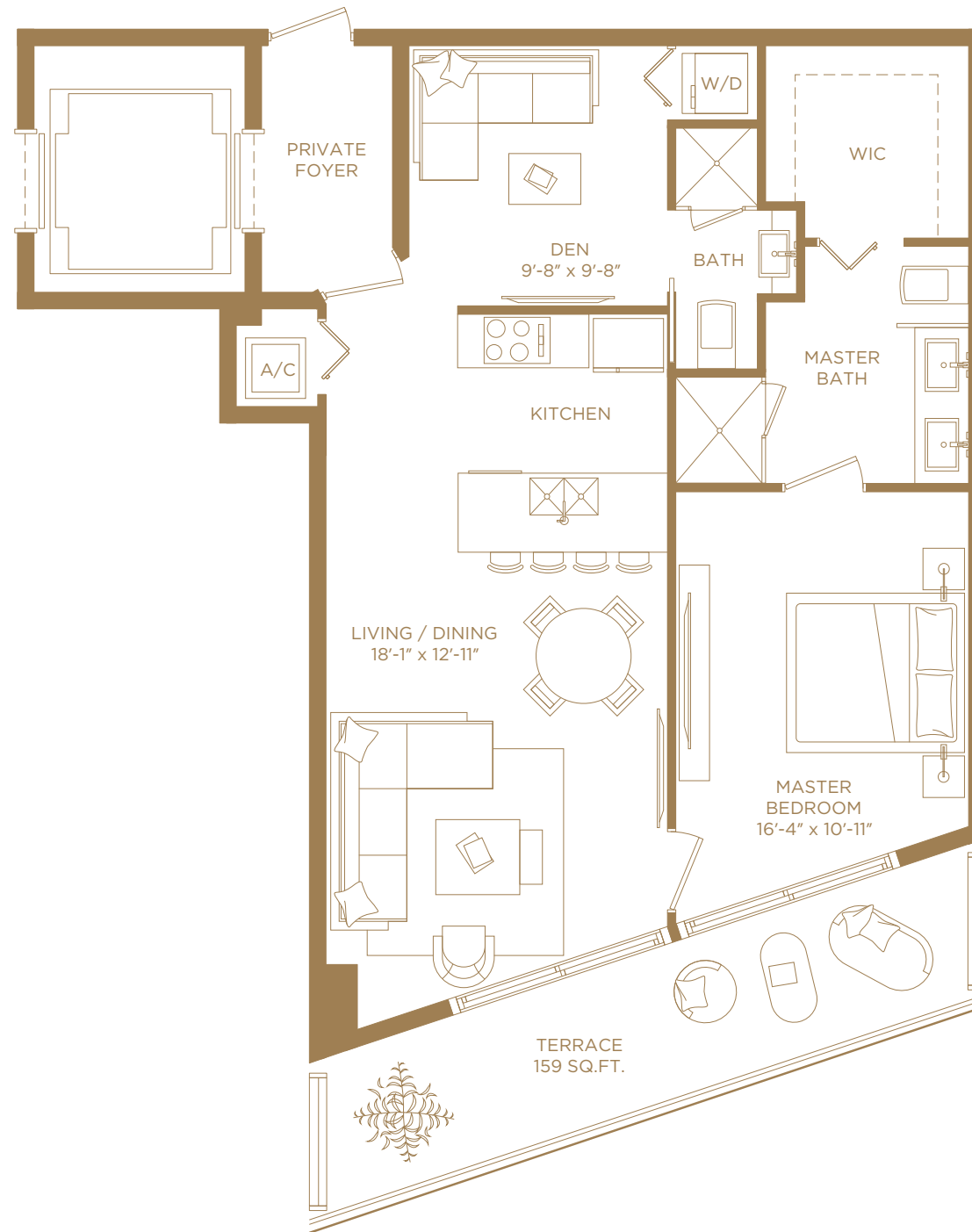
A/C INTERIOR AREA	1,242 SQ. FT.	115.39 SQ. M.
TERRACE AREA	234 SQ. FT.	21.74 SQ. M.
TOTAL RESIDENCE	1,476 SQ. FT.	137.12 SQ. M.

There are various methods for calculating the square footage of a Unit and depending on the method of calculation, the quoted square footage of a Unit in advertising materials may vary from the square footage of a Unit as stated or described in the Prospectus and the Declaration. The dimensions in the Unit shown in these floor plans have been calculated from the exterior boundaries of the exterior walls to the centerline of interior demising walls, including common elements such as structural walls and other interior structural components of the building and in fact vary from the dimensions that would be determined by using the description and definition of the "Unit" set forth in the Prospectus and the Declaration. For your reference, the area of the Unit, determined in accordance with the Unit boundaries as defined in the Prospectus and the Declaration are less than the square footage reflected here. The configuration and use of space or the floor plan design may vary from that in the Prospectus and Declaration because the Developer has reserved the right in the Prospectus to make design, dimension, specification, and plan changes at any time, in the Developer's discretion, without notice to Unit buyers. The measurements of room set forth on this floor plan are generally taken at the greatest points of each given room (as if the room were a perfect rectangle) without regard for any cutouts. Accordingly, the area of the actual room will typically smaller than the product obtained by multiplying the stated length times width. All dimensions are approximate and may vary with actual construction, and all floor plans and development plans are subject to change. The furnishings and décor illustrated are not included with the purchase of the Unit. See Prospectus for additional information regarding what is offered with the Unit and the calculation of the Unit square footage and dimensions. Terraces depicted are for illustration only and may not reflect the final terrace design. The Developer reserves the right to modify, without notice, the size, dimension, and configuration of the terraces based upon the final architectural and engineering specifications.





SLS LUX™
BRICKELL

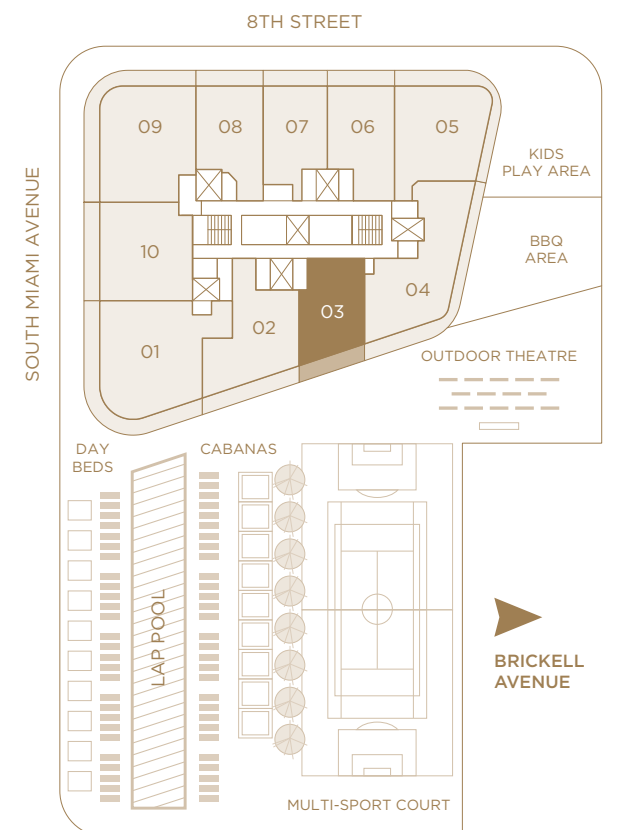


RESIDENCE 03

1 BEDROOM & DEN / 2 BATHS

A/C INTERIOR AREA	956 SQ. FT.	88.81 SQ. M.
TERRACE AREA	159 SQ. FT.	14.77 SQ. M.
TOTAL RESIDENCE	1,115 SQ. FT.	103.58 SQ. M.

There are various methods for calculating the square footage of a Unit and depending on the method of calculation, the quoted square footage of a Unit in advertising materials may vary from the square footage of a Unit as stated or described in the Prospectus and the Declaration. The dimensions in the Unit shown in these floor plans have been calculated from the exterior boundaries of the exterior walls to the centerline of interior demising walls, including common elements such as structural walls and other interior structural components of the building and in fact vary from the dimensions that would be determined by using the description and definition of the "Unit" set forth in the Prospectus and the Declaration. For your reference, the area of the Unit, determined in accordance with the Unit boundaries as defined in the Prospectus and the Declaration are less than the square footage reflected here. The configuration and use of space or the floor plan design may vary from that in the Prospectus and Declaration because the Developer has reserved the right in the Prospectus to make design, dimension, specification, and plan changes at any time, in the Developer's discretion, without notice to Unit buyers. The measurements of room set forth on this floor plan are generally taken at the greatest points of each given room (as if the room were a perfect rectangle) without regard for any cutouts. Accordingly, the area of the actual room will typically smaller than the product obtained by multiplying the stated length times width. All dimensions are approximate and may vary with actual construction, and all floor plans and development plans are subject to change. The furnishings and décor illustrated are not included with the purchase of the Unit. See Prospectus for additional information regarding what is offered with the Unit and the calculation of the Unit square footage and dimensions. Terraces depicted are for illustration only and may not reflect the final terrace design. The Developer reserves the right to modify, without notice, the size, dimension, and configuration of the terraces based upon the final architectural and engineering specifications.

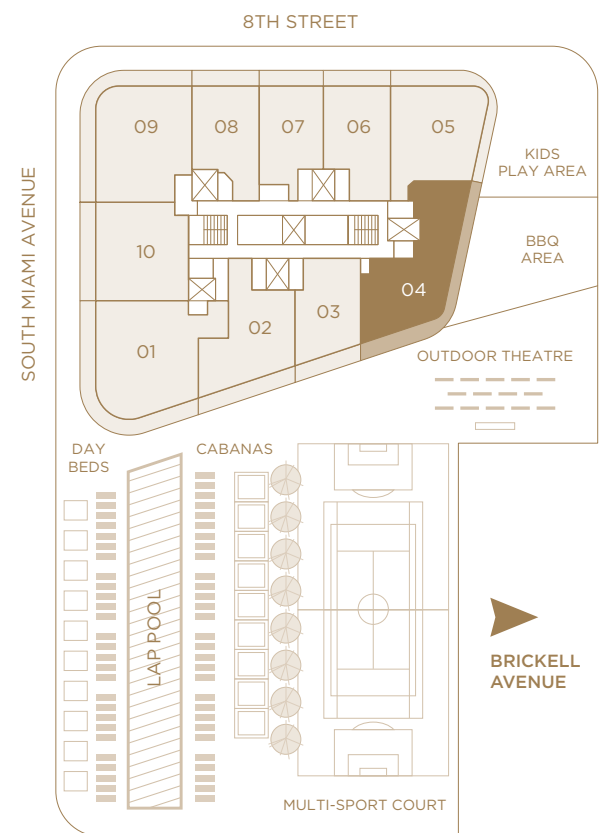




SLS LUX™
BRICKELL



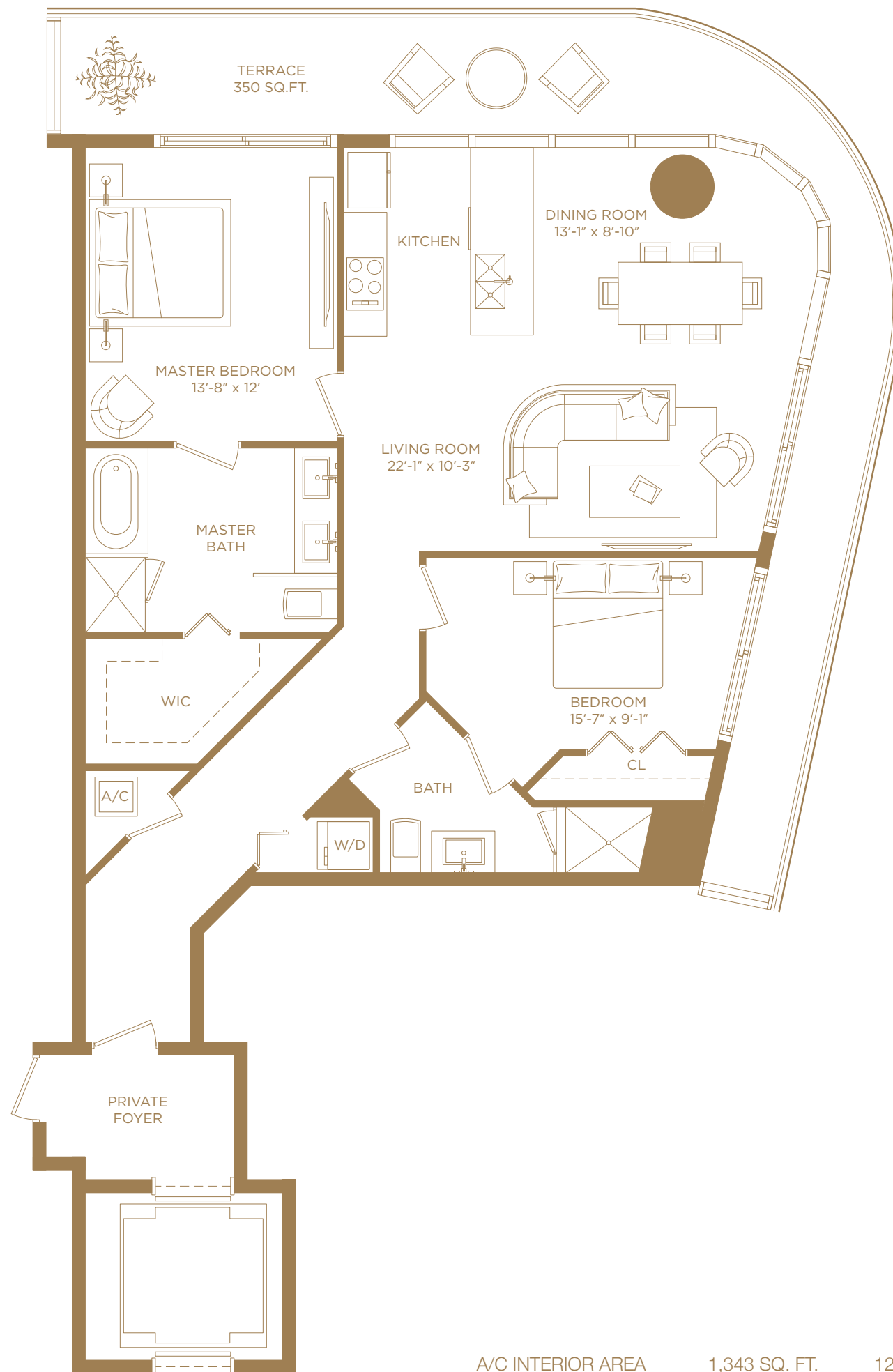
A/C INTERIOR AREA	1,514 SQ. FT.	140.66 SQ. M.
TERRACE AREA	414 SQ. FT.	38.46 SQ. M.
TOTAL RESIDENCE	1,928 SQ. FT.	176.12 SQ. M.



There are various methods for calculating the square footage of a Unit and depending on the method of calculation, the quoted square footage of a Unit in advertising materials may vary from the square footage of a Unit as stated or described in the Prospectus and the Declaration. The dimensions in the Unit shown in these floor plans have been calculated from the exterior boundaries of the exterior walls to the centerline of interior demising walls, including common elements such as structural walls and other interior structural components of the building and in fact vary from the dimensions that would be determined by using the description and definition of the "Unit" set forth in the Prospectus and the Declaration. For your reference, the area of the Unit, determined in accordance with the Unit boundaries as defined in the Prospectus and the Declaration are less than the square footage reflected here. The configuration and use of space or the floor plan design may vary from that in the Prospectus and Declaration because the Developer has reserved the right in the Prospectus to make design, dimension, specification, and plan changes at any time, in the Developer's discretion, without notice to Unit buyers. The measurements of room set forth on this floor plan are generally taken at the greatest points of each given room (as if the room were a perfect rectangle) without regard for any cutouts. Accordingly, the area of the actual room will typically smaller than the product obtained by multiplying the stated length times width. All dimensions are approximate and may vary with actual construction, and all floor plans and development plans are subject to change. The furnishings and décor illustrated are not included with the purchase of the Unit. See Prospectus for additional information regarding what is offered with the Unit and the calculation of the Unit square footage and dimensions. Terraces depicted are for illustration only and may not reflect the final terrace design. The Developer reserves the right to modify, without notice, the size, dimension, and configuration of the terraces based upon the final architectural and engineering specifications.



SLS LUX™
BRICKELL

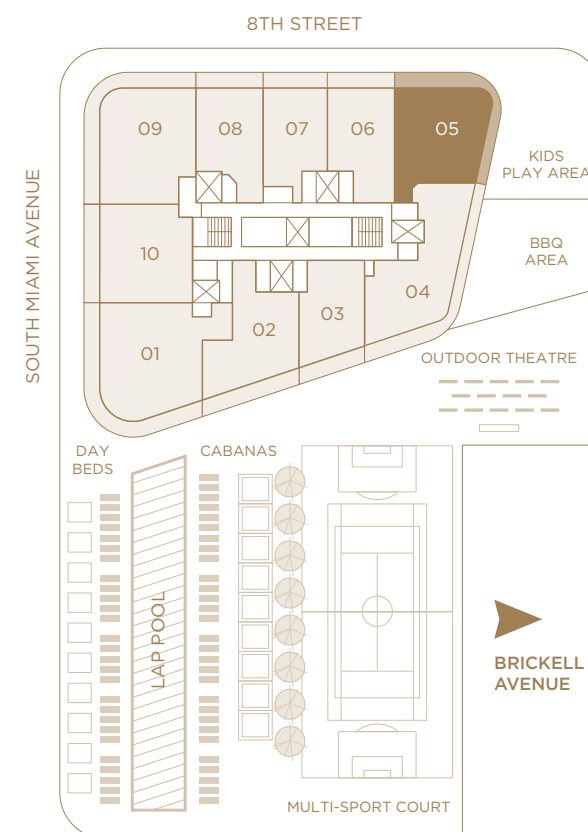


RESIDENCE 05

2 BEDROOMS / 2 BATHS

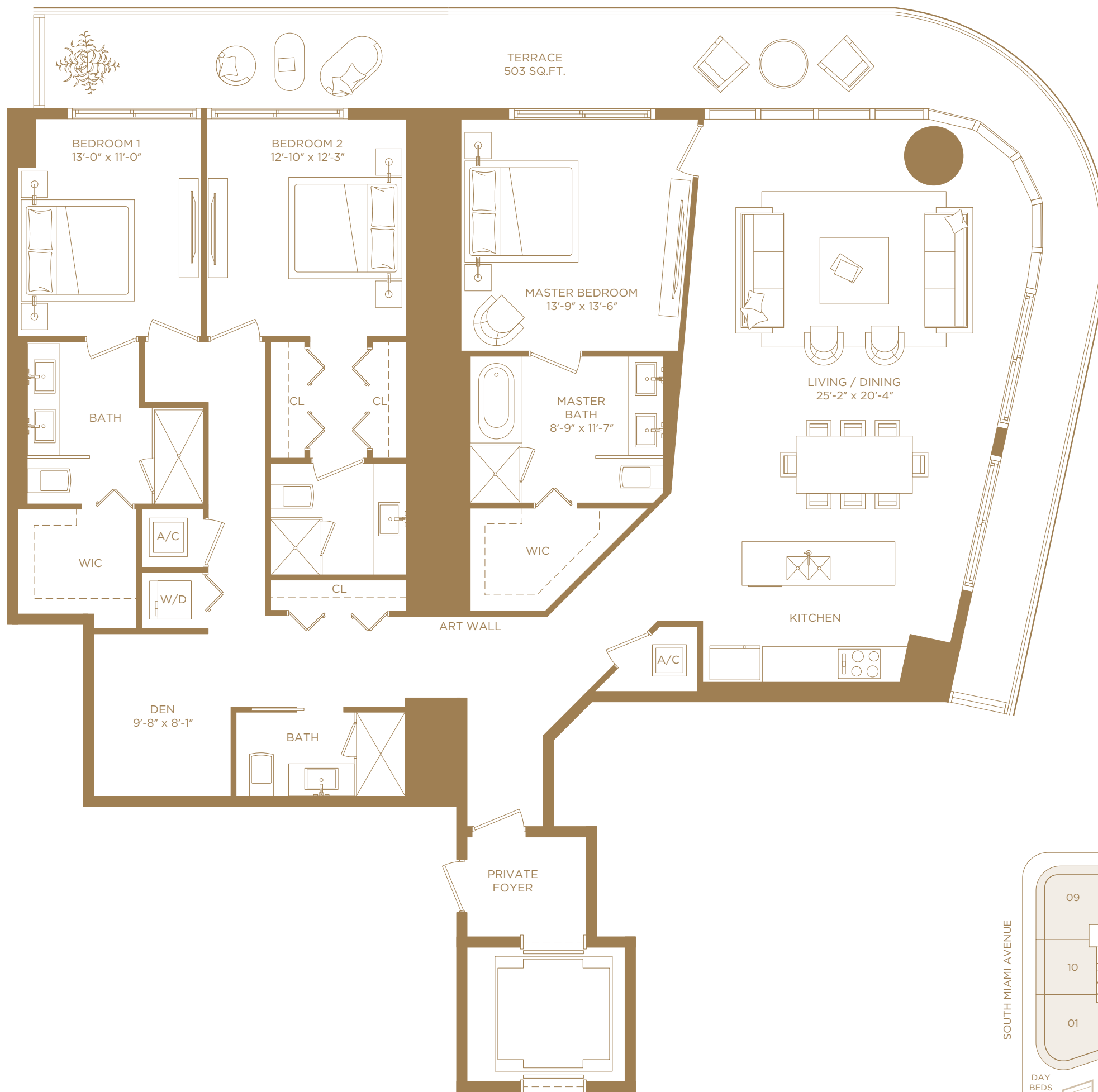
A/C INTERIOR AREA	1,343 SQ. FT.	124.76 SQ. M.
TERRACE AREA	350 SQ. FT.	32.52 SQ. M.
TOTAL RESIDENCE	1,693 SQ. FT.	157.28 SQ. M.

There are various methods for calculating the square footage of a Unit and depending on the method of calculation, the quoted square footage of a Unit in advertising materials may vary from the square footage of a Unit as stated or described in the Prospectus and the Declaration. The dimensions in the Unit shown in these floor plans have been calculated from the exterior boundaries of the exterior walls to the centerline of interior demising walls, including common elements such as structural walls and other interior structural components of the building and in fact vary from the dimensions that would be determined by using the description and definition of the "Unit" set forth in the Prospectus and the Declaration. For your reference, the area of the Unit, determined in accordance with the Unit boundaries as defined in the Prospectus and the Declaration are less than the square footage reflected here. The configuration and use of space or the floor plan design may vary from that in the Prospectus and Declaration because the Developer has reserved the right in the Prospectus to make design, dimension, specification, and plan changes at any time, in the Developer's discretion, without notice to Unit buyers. The measurements of room set forth on this floor plan are generally taken at the greatest points of each given room (as if the room were a perfect rectangle) without regard for any cutouts. Accordingly, the area of the actual room will typically smaller than the product obtained by multiplying the stated length times width. All dimensions are approximate and may vary with actual construction, and all floor plans and development plans are subject to change. The furnishings and décor illustrated are not included with the purchase of the Unit. See Prospectus for additional information regarding what is offered with the Unit and the calculation of the Unit square footage and dimensions. Terraces depicted are for illustration only and may not reflect the final architectural and engineering specifications. The Developer reserves the right to modify, without notice, the size, dimension, and configuration of the terraces based upon the final architectural and engineering specifications.





SLS LUX™
BRICKELL

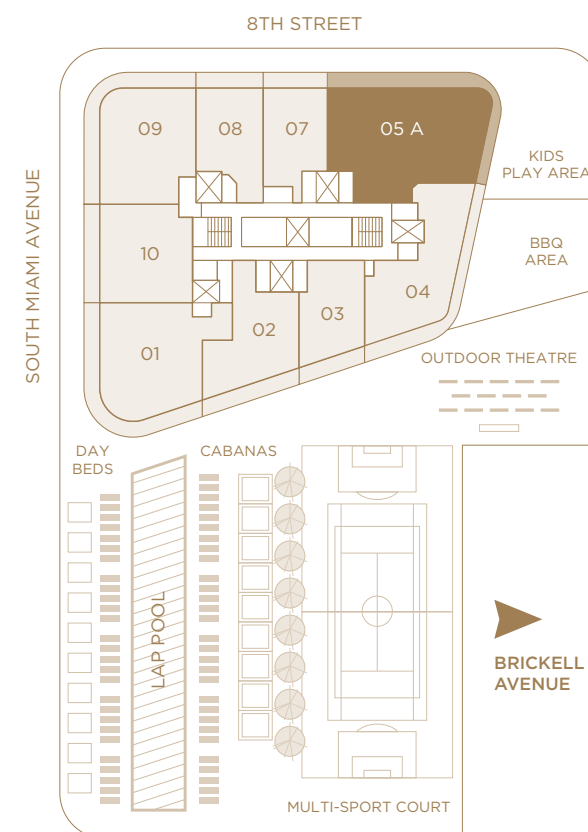


RESIDENCE 05 A

3 BEDROOMS & DEN / 4 BATHS

A/C INTERIOR AREA	2,410 SQ. FT.	223.89 SQ. M.
TERRACE AREA	503 SQ. FT.	46.73 SQ. M.
TOTAL RESIDENCE	2,913 SQ. FT.	270.62 SQ. M.

There are various methods for calculating the square footage of a Unit and depending on the method of calculation, the quoted square footage of a Unit in advertising materials may vary from the square footage of a Unit as stated or described in the Prospectus and the Declaration. The dimensions in the Unit shown in these floor plans have been calculated from the exterior boundaries of the exterior walls to the centerline of interior demising walls, including common elements such as structural walls and other interior structural components of the building and in fact vary from the dimensions that would be determined by using the description and definition of the "Unit" set forth in the Prospectus and the Declaration. For your reference, the area of the Unit, determined in accordance with the Unit boundaries as defined in the Prospectus and the Declaration are less than the square footage reflected here. The configuration and use of space or the floor plan design may vary from that in the Prospectus and Declaration because the Developer has reserved the right in the Prospectus to make design, dimension, specification, and plan changes at any time, in the Developer's discretion, without notice to Unit buyers. The measurements of room set forth on this floor plan are generally taken at the greatest points of each given room (as if the room were a perfect rectangle) without regard for any cutouts. Accordingly, the area of the actual room will typically smaller than the product obtained by multiplying the stated length times width. All dimensions are approximate and may vary with actual construction, and all floor plans and development plans are subject to change. The furnishings and décor illustrated are not included with the purchase of the Unit. See Prospectus for additional information regarding what is offered with the Unit and the calculation of the Unit square footage and dimensions. Terraces depicted are for illustration only and may not reflect the final terrace design. The Developer reserves the right to modify, without notice, the size, dimension, and configuration of the terraces based upon the final architectural and engineering specifications.





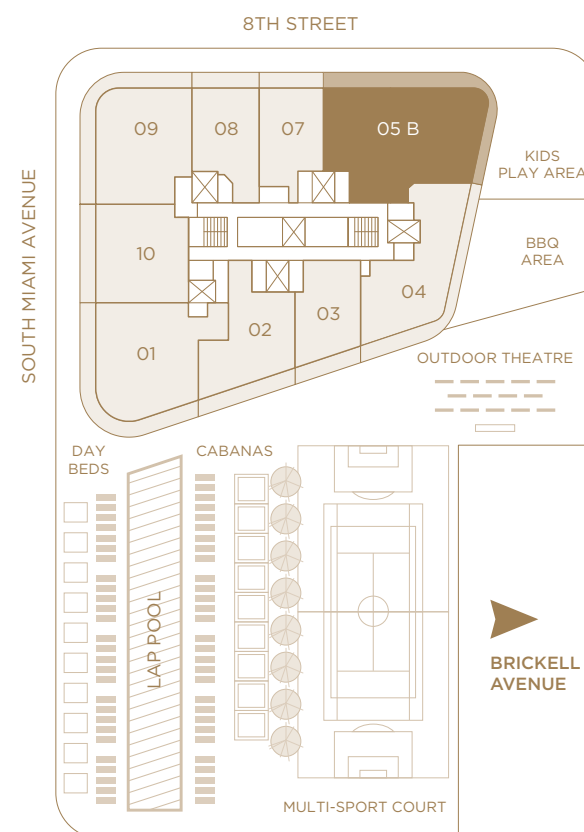
SLS LUX™
BRICKELL



RESIDENCE 05 B

3 BEDROOMS & DEN / 3 BATHS + STORAGE

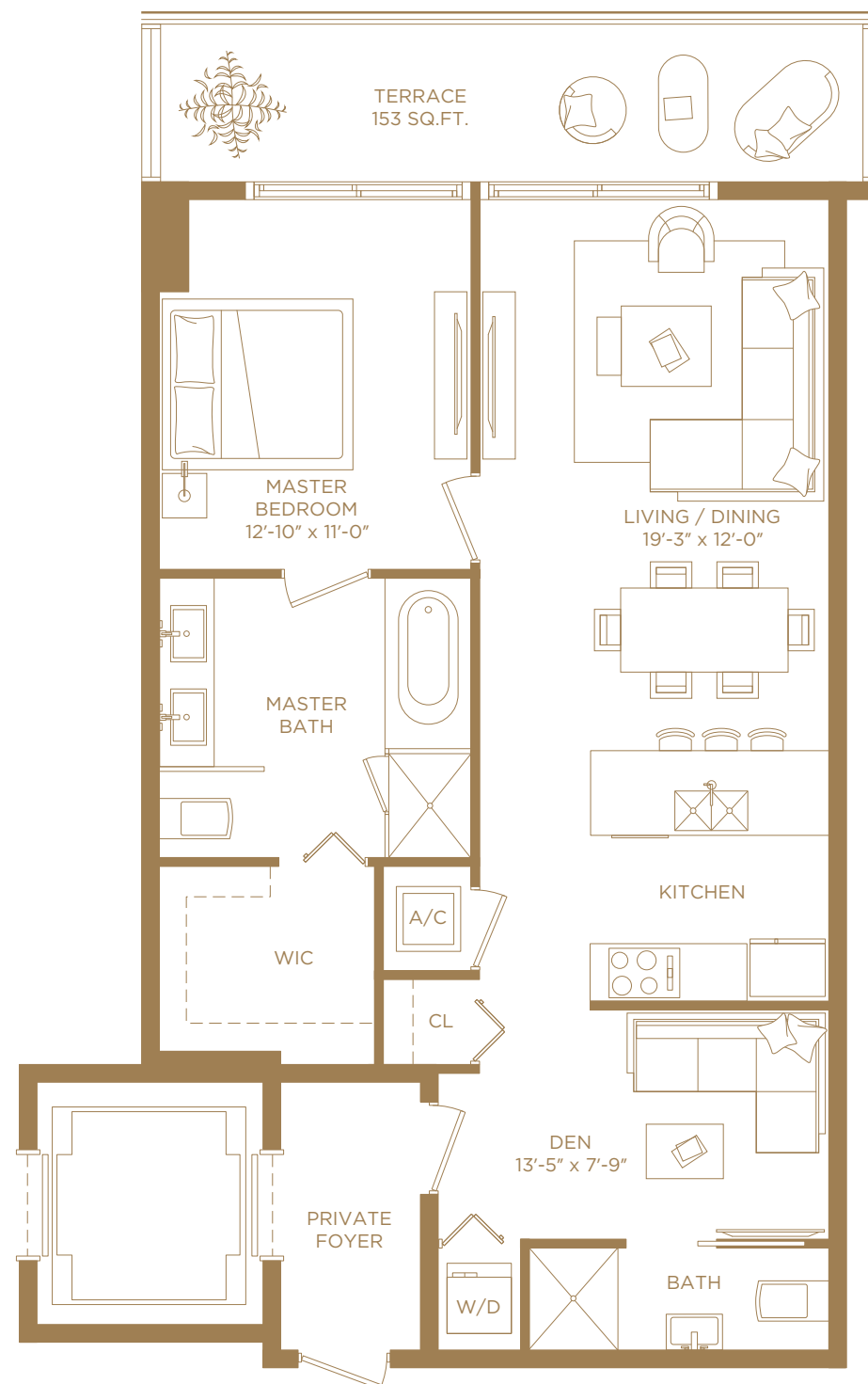
A/C INTERIOR AREA	2,410 SQ. FT.	223.89 SQ. M.
TERRACE AREA	503 SQ. FT.	46.73 SQ. M.
TOTAL RESIDENCE	2,913 SQ. FT.	270.62 SQ. M.



There are various methods for calculating the square footage of a Unit and depending on the method of calculation, the quoted square footage of a Unit in advertising materials may vary from the square footage of a Unit as stated or described in the Prospectus and the Declaration. The dimensions in the Unit shown in these floor plans have been calculated from the exterior boundaries of the exterior walls to the centerline of interior demising walls, including common elements such as structural walls and other interior structural components of the building and in fact vary from the dimensions that would be determined by using the description and definition of the "Unit" set forth in the Prospectus and the Declaration. For your reference, the area of the Unit, determined in accordance with the Unit boundaries as defined in the Prospectus and the Declaration are less than the square footage reflected here. The configuration and use of space or the floor plan design may vary from that in the Prospectus and Declaration because the Developer has reserved the right in the Prospectus to make design, dimension, specification, and plan changes at any time, in the Developer's discretion, without notice to Unit buyers. The measurements of room set forth on this floor plan are generally taken at the greatest points of each given room (as if the room were a perfect rectangle) without regard for any cutouts. Accordingly, the area of the actual room will typically smaller than the product obtained by multiplying the stated length times width. All dimensions are approximate and may vary with actual construction, and all floor plans and development plans are subject to change. The furnishings and décor illustrated are not included with the purchase of the Unit. See Prospectus for additional information regarding what is offered with the Unit and the calculation of the Unit square footage and dimensions. Terraces depicted are for illustration only and may not reflect the final terrace design. The Developer reserves the right to modify, without notice, the size, dimension, and configuration of the terraces based upon the final architectural and engineering specifications.



SLS LUX™
BRICKELL

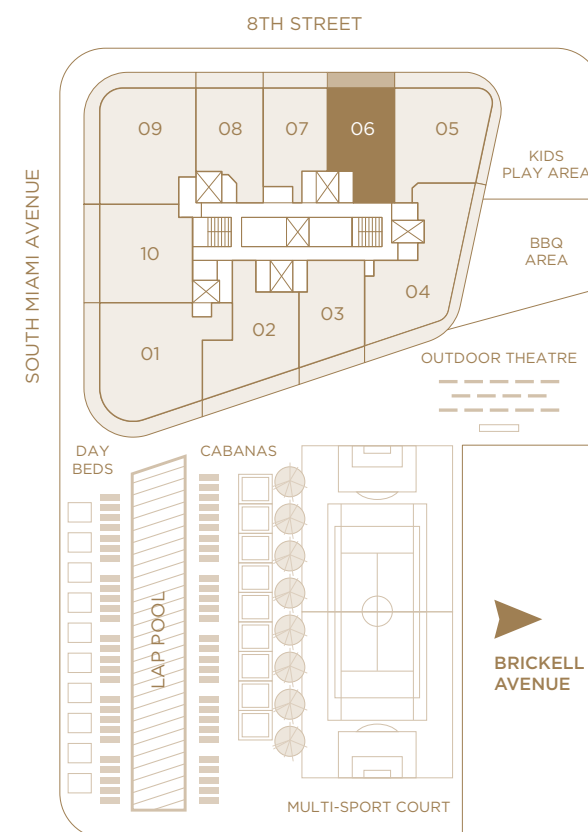


RESIDENCE 06

1 BEDROOM & DEN / 2 BATHS

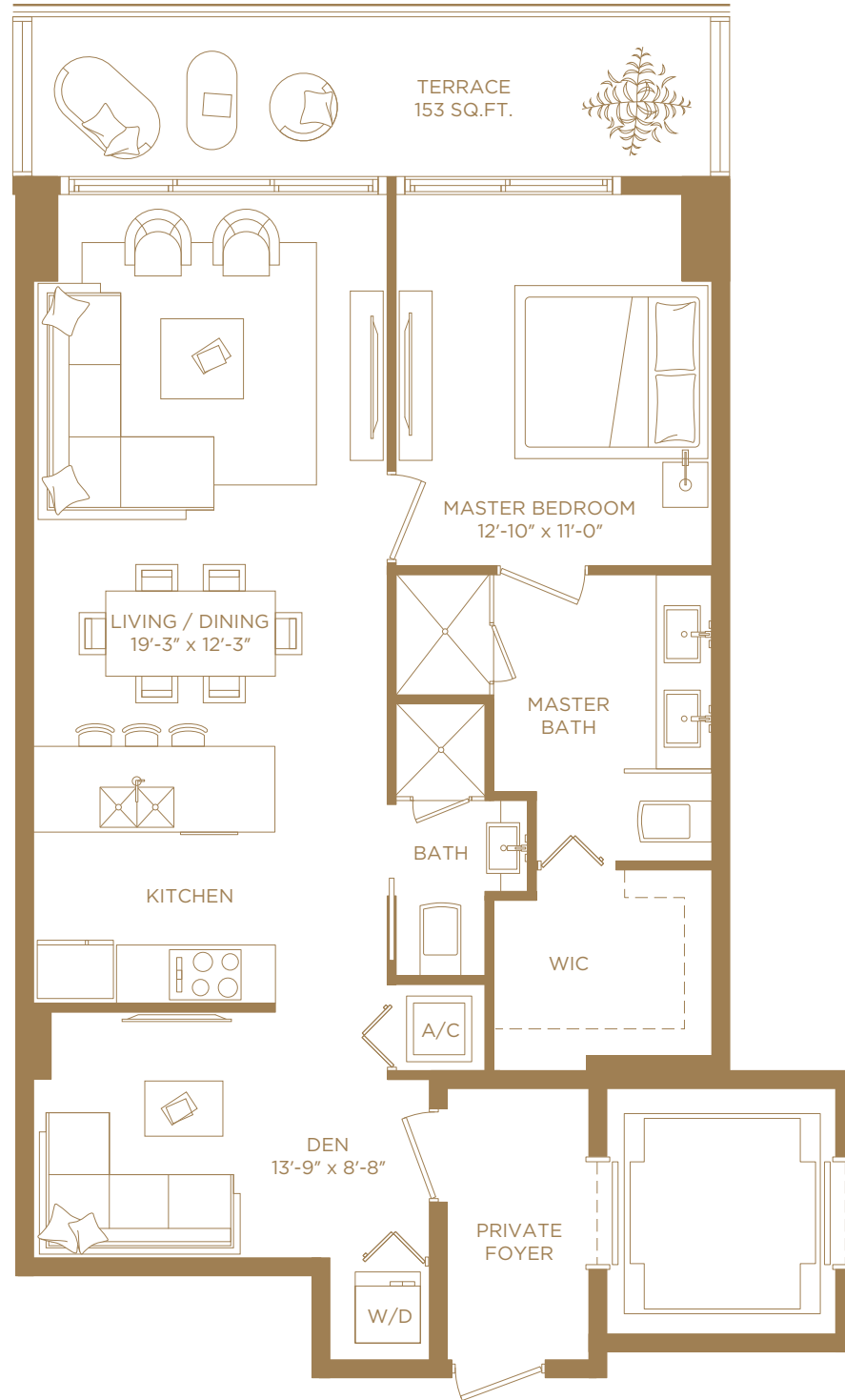
A/C INTERIOR AREA	1,075 SQ. FT.	99.87 SQ. M.
TERRACE AREA	153 SQ. FT.	14.21 SQ. M.
TOTAL RESIDENCE	1,228 SQ. FT.	114.08 SQ. M.

There are various methods for calculating the square footage of a Unit and depending on the method of calculation, the quoted square footage of a Unit in advertising materials may vary from the square footage of a Unit as stated or described in the Prospectus and the Declaration. The dimensions in the Unit shown in these floor plans have been calculated from the exterior boundaries of the exterior walls to the centerline of interior demising walls, including common elements such as structural walls and other interior structural components of the building and in fact vary from the dimensions that would be determined by using the description and definition of the "Unit" set forth in the Prospectus and the Declaration. For your reference, the area of the Unit, determined in accordance with the Unit boundaries as defined in the Prospectus and the Declaration are less than the square footage reflected here. The configuration and use of space or the floor plan design may vary from that in the Prospectus and Declaration because the Developer has reserved the right in the Prospectus to make design, dimension, specification, and plan changes at any time, in the Developer's discretion, without notice to Unit buyers. The measurements of room set forth on this floor plan are generally taken at the greatest points of each given room (as if the room were a perfect rectangle) without regard for any cutouts. Accordingly, the area of the actual room will typically smaller than the product obtained by multiplying the stated length times width. All dimensions are approximate and may vary with actual construction, and all floor plans and development plans are subject to change. The furnishings and décor illustrated are not included with the purchase of the Unit. See Prospectus for additional information regarding what is offered with the Unit and the calculation of the Unit square footage and dimensions. Terraces depicted are for illustration only and may not reflect the final terrace design. The Developer reserves the right to modify, without notice, the size, dimension, and configuration of the terraces based upon the final architectural and engineering specifications.





SLS LUX™
BRICKELL

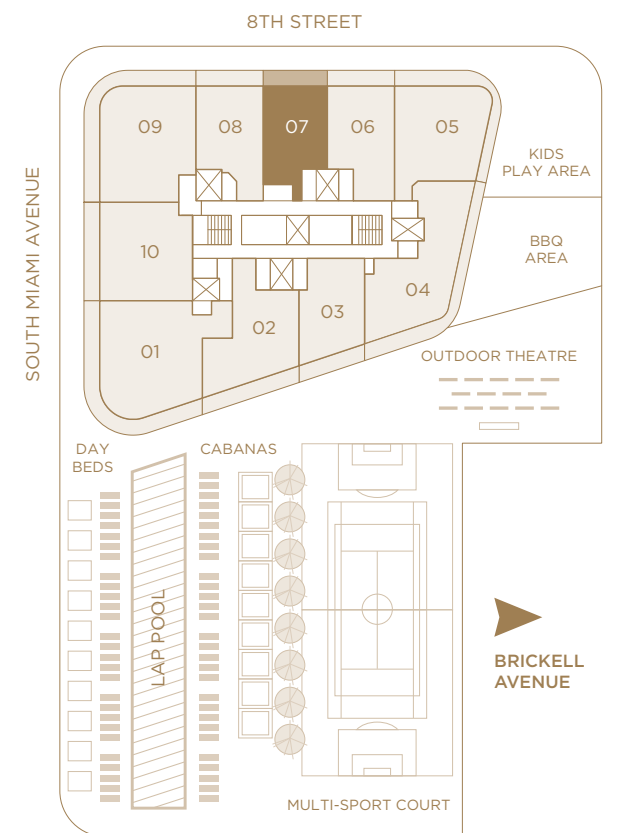


RESIDENCE 07

1 BEDROOM & DEN / 2 BATHS

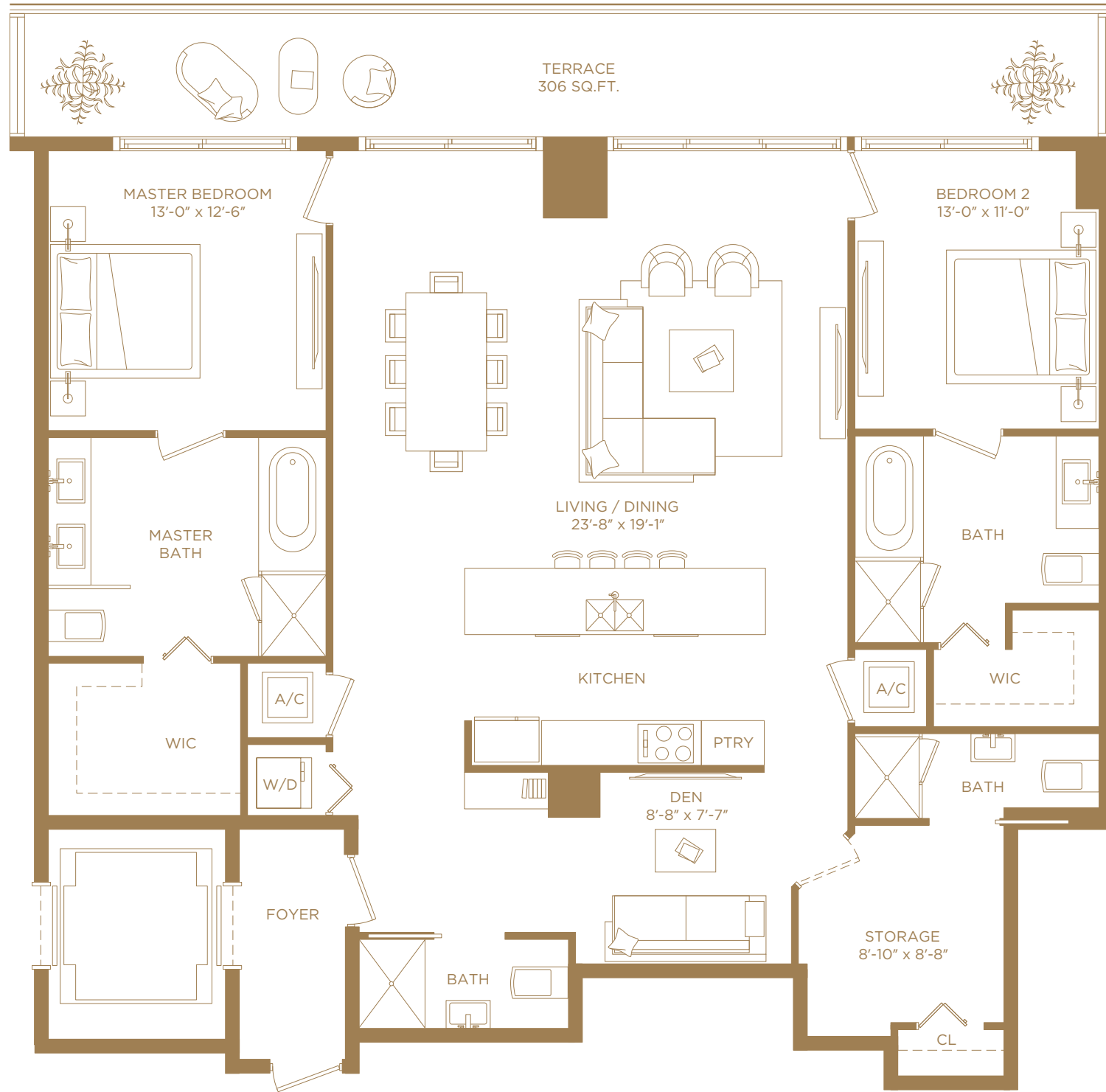
A/C INTERIOR AREA	962 SQ. FT.	89.37 SQ. M.
TERRACE AREA	153 SQ. FT.	14.21 SQ. M.
TOTAL RESIDENCE	1,115 SQ. FT.	103.58 SQ. M.

There are various methods for calculating the square footage of a Unit and depending on the method of calculation, the quoted square footage of a Unit in advertising materials may vary from the square footage of a Unit as stated or described in the Prospectus and the Declaration. The dimensions in the Unit shown in these floor plans have been calculated from the exterior boundaries of the exterior walls to the centerline of interior demising walls, including common elements such as structural walls and other interior structural components of the building and in fact vary from the dimensions that would be determined by using the description and definition of the "Unit" set forth in the Prospectus and the Declaration. For your reference, the area of the Unit, determined in accordance with the Unit boundaries as defined in the Prospectus and the Declaration are less than the square footage reflected here. The configuration and use of space or the floor plan design may vary from that in the Prospectus and Declaration because the Developer has reserved the right in the Prospectus to make design, dimension, specification, and plan changes at any time, in the Developer's discretion, without notice to Unit buyers. The measurements of room set forth on this floor plan are generally taken at the greatest points of each given room (as if the room were a perfect rectangle) without regard for any cutouts. Accordingly, the area of the actual room will typically smaller than the product obtained by multiplying the stated length times width. All dimensions are approximate and may vary with actual construction, and all floor plans and development plans are subject to change. The furnishings and décor illustrated are not included with the purchase of the Unit. See Prospectus for additional information regarding what is offered with the Unit and the calculation of the Unit square footage and dimensions. Terraces depicted are for illustration only and may not reflect the final terrace design. The Developer reserves the right to modify, without notice, the size, dimension, and configuration of the terraces based upon the final architectural and engineering specifications.





SLS LUX™
BRICKELL

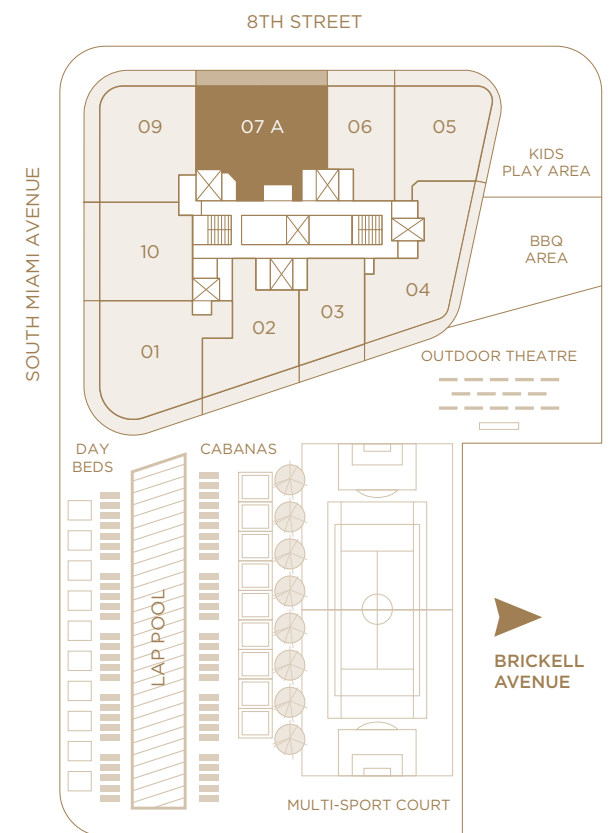


RESIDENCE 07 A

2 BEDROOMS & DEN / 4 BATHS + STORAGE

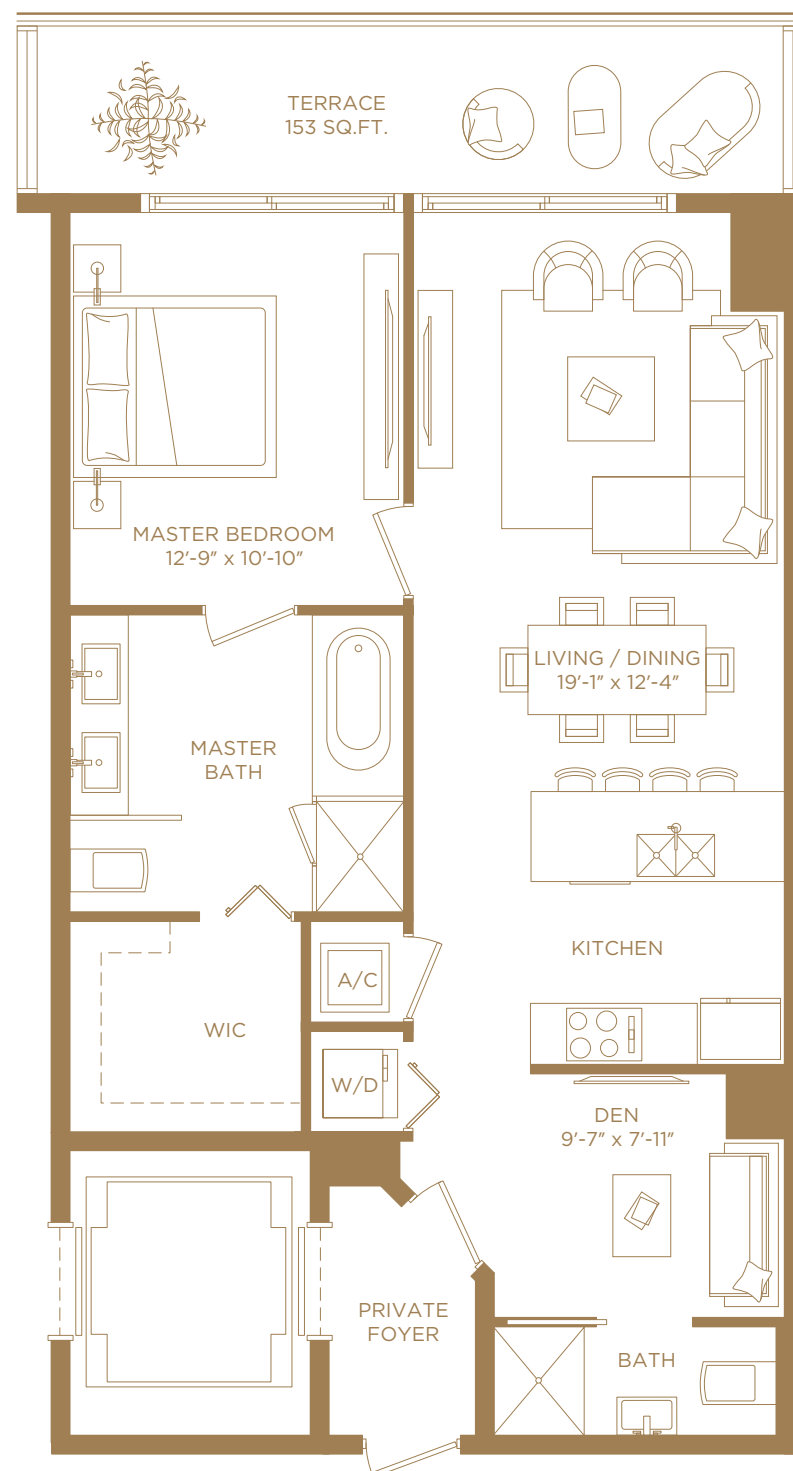
A/C INTERIOR AREA	1,968 SQ. FT.	182.83 SQ. M.
TERRACE AREA	306 SQ. FT.	28.43 SQ. M.
TOTAL RESIDENCE	2,274 SQ. FT.	211.26 SQ. M.

There are various methods for calculating the square footage of a Unit and depending on the method of calculation, the quoted square footage of a Unit in advertising materials may vary from the square footage of a Unit as stated or described in the Prospectus and the Declaration. The dimensions in the Unit shown in these floor plans have been calculated from the exterior boundaries of the exterior walls to the centerline of interior demising walls, including common elements such as structural walls and other interior structural components of the building and in fact vary from the dimensions that would be determined by using the description and definition of the "Unit" set forth in the Prospectus and the Declaration. For your reference, the area of the Unit, determined in accordance with the Unit boundaries as defined in the Prospectus and the Declaration are less than the square footage reflected here. The configuration and use of space or the floor plan design may vary from that in the Prospectus and Declaration because the Developer has reserved the right in the Prospectus to make design, dimension, specification, and plan changes at any time, in the Developer's discretion, without notice to Unit buyers. The measurements of room set forth on this floor plan are generally taken at the greatest points of each given room (as if the room were a perfect rectangle) without regard for any cutouts. Accordingly, the area of the actual room will typically smaller than the product obtained by multiplying the stated length times width. All dimensions are approximate and may vary with actual construction, and all floor plans and development plans are subject to change. The furnishings and décor illustrated are not included with the purchase of the Unit. See Prospectus for additional information regarding what is offered with the Unit and the calculation of the Unit square footage and dimensions. Terraces depicted are for illustration only and may not reflect the final architectural and engineering specifications. The Developer reserves the right to modify, without notice, the size, dimension, and configuration of the terraces based upon the final architectural and engineering specifications.





SLS LUX™
BRICKELL

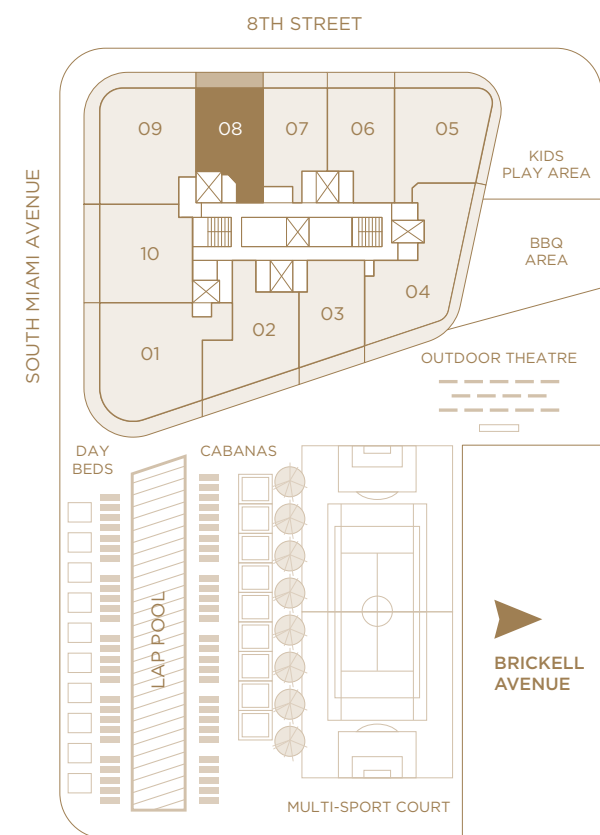


RESIDENCE 08

1 BEDROOM & DEN / 2 BATHS

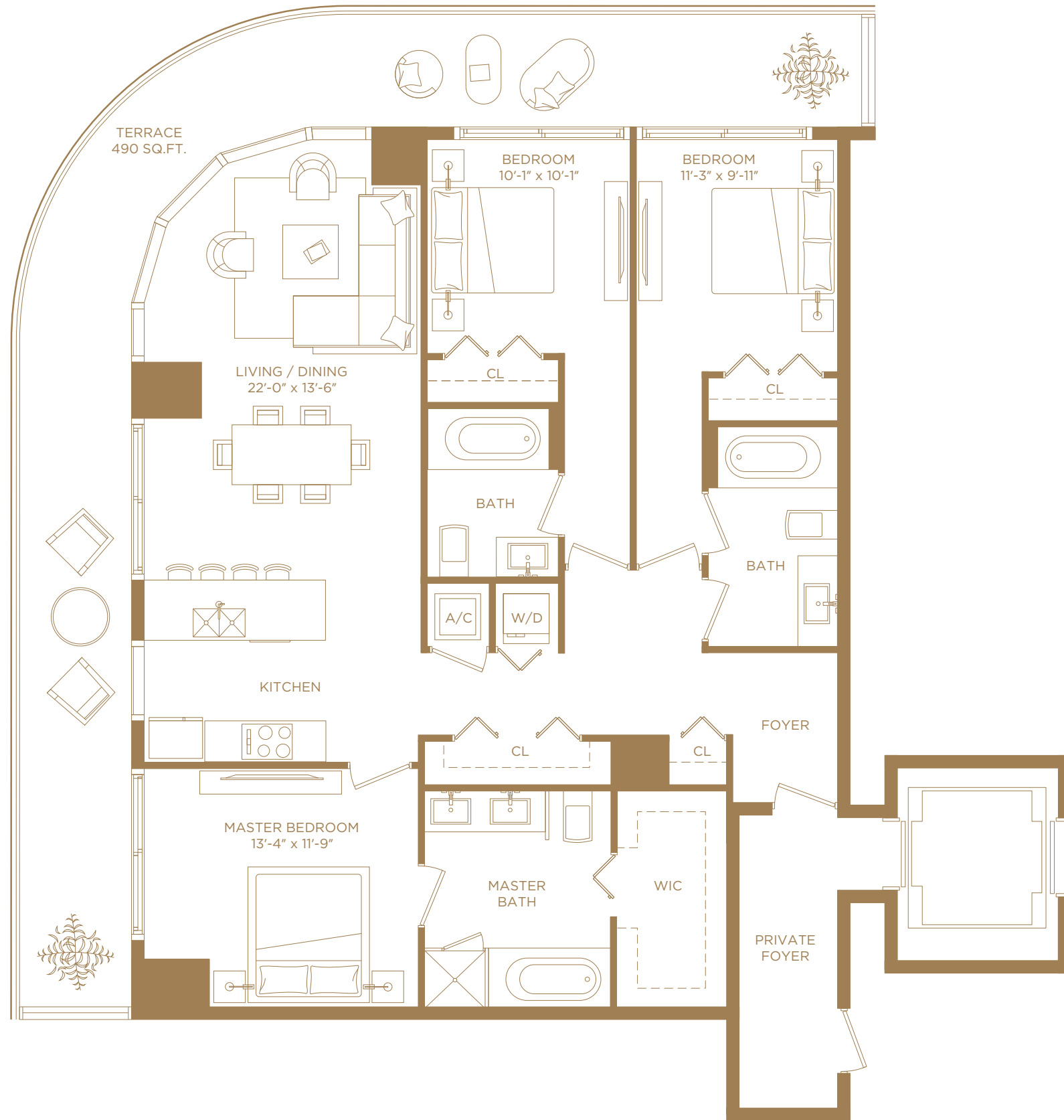
A/C INTERIOR AREA	1,010 SQ. FT.	93.83 SQ. M.
TERRACE AREA	153 SQ. FT.	14.21 SQ. M.
TOTAL RESIDENCE	1,163 SQ. FT.	108.04 SQ. M.

There are various methods for calculating the square footage of a Unit and depending on the method of calculation, the quoted square footage of a Unit in advertising materials may vary from the square footage of a Unit as stated or described in the Prospectus and the Declaration. The dimensions in the Unit shown in these floor plans have been calculated from the exterior boundaries of the exterior walls to the centerline of interior demising walls, including common elements such as structural walls and other interior structural components of the building and in fact vary from the dimensions that would be determined by using the description and definition of the "Unit" set forth in the Prospectus and the Declaration. For your reference, the area of the Unit, determined in accordance with the Unit boundaries as defined in the Prospectus and the Declaration are less than the square footage reflected here. The configuration and use of space or the floor plan design may vary from that in the Prospectus and Declaration because the Developer has reserved the right in the Prospectus to make design, dimension, specification, and plan changes at any time, in the Developer's discretion, without notice to Unit buyers. The measurements of room set forth on this floor plan are generally taken at the greatest points of each given room (as if the room were a perfect rectangle) without regard for any cutouts. Accordingly, the area of the actual room will typically smaller than the product obtained by multiplying the stated length times width. All dimensions are approximate and may vary with actual construction, and all floor plans and development plans are subject to change. The furnishings and décor illustrated are not included with the purchase of the Unit. See Prospectus for additional information regarding what is offered with the Unit and the calculation of the Unit square footage and dimensions. Terraces depicted are for illustration only and may not reflect the final terrace design. The Developer reserves the right to modify, without notice, the size, dimension, and configuration of the terraces based upon the final architectural and engineering specifications.





SLS LUX™
BRICKELL

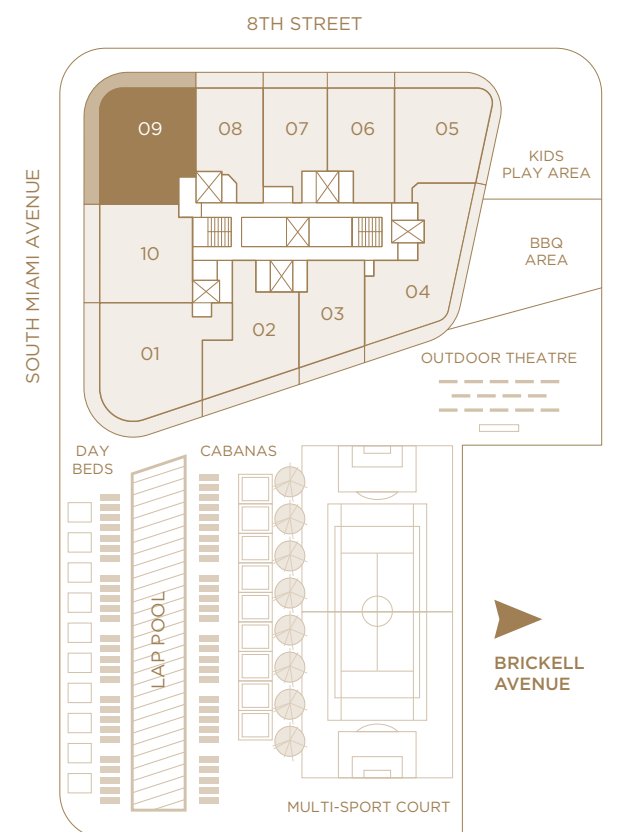


RESIDENCE 09

3 BEDROOMS / 3 BATHS

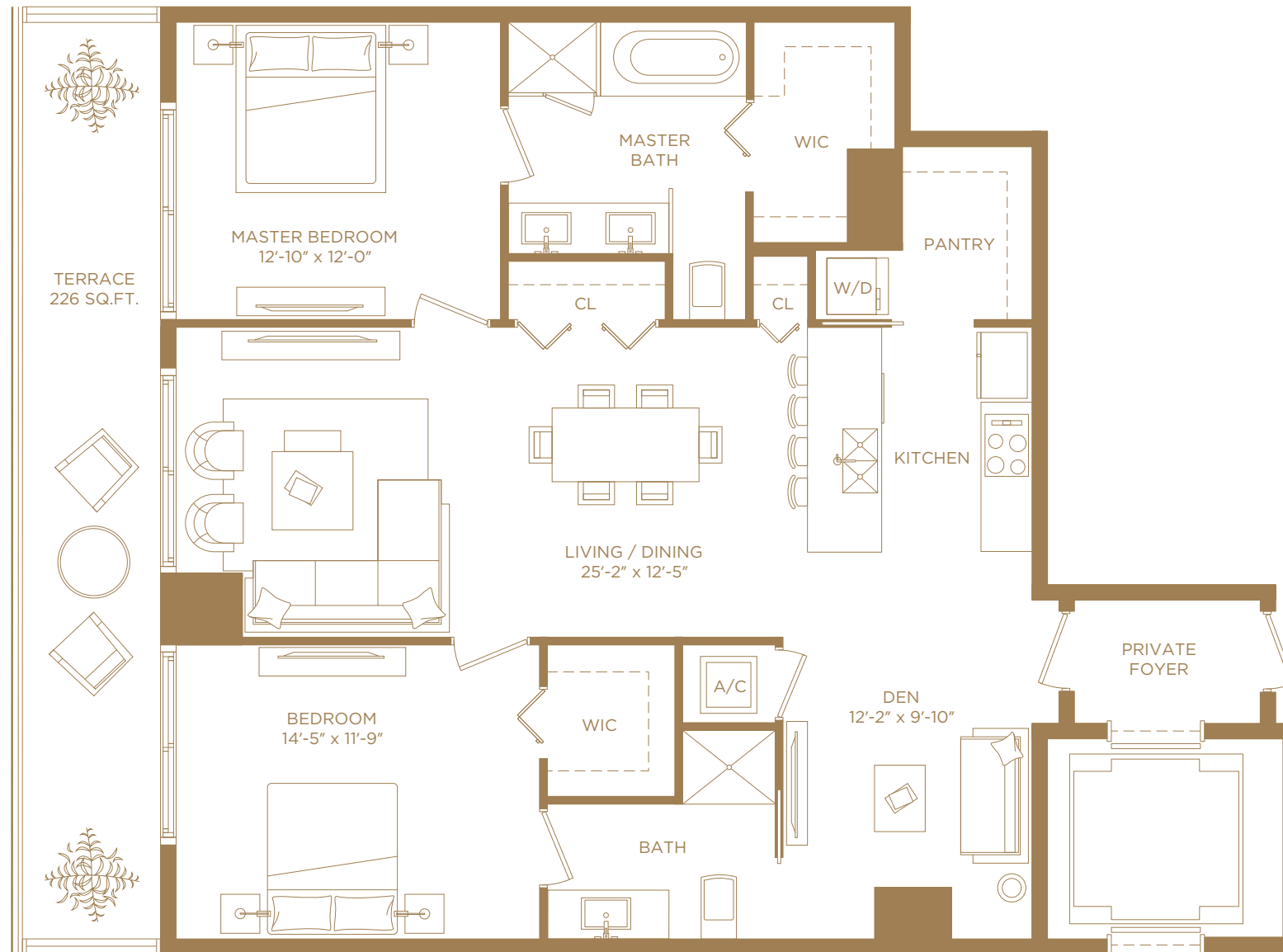
A/C INTERIOR AREA	1,657 SQ. FT.	153.94 SQ. M.
TERRACE AREA	490 SQ. FT.	45.52 SQ. M.
TOTAL RESIDENCE	2,147 SQ. FT.	199.46 SQ. M.

There are various methods for calculating the square footage of a Unit and depending on the method of calculation, the quoted square footage of a Unit in advertising materials may vary from the square footage of a Unit as stated or described in the Prospectus and the Declaration. The dimensions in the Unit shown in these floor plans have been calculated from the exterior boundaries of the exterior walls to the centerline of interior demising walls, including common elements such as structural walls and other interior structural components of the building and in fact vary from the dimensions that would be determined by using the description and definition of the "Unit" set forth in the Prospectus and the Declaration. For your reference, the area of the Unit, determined in accordance with the Unit boundaries as defined in the Prospectus and the Declaration are less than the square footage reflected here. The configuration and use of space or the floor plan design may vary from that in the Prospectus and Declaration because the Developer has reserved the right in the Prospectus to make design, dimension, specification, and plan changes at any time, in the Developer's discretion, without notice to Unit buyers. The measurements of room set forth on this floor plan are generally taken at the greatest points of each given room (as if the room were a perfect rectangle) without regard for any cutouts. Accordingly, the area of the actual room will typically smaller than the product obtained by multiplying the stated length times width. All dimensions are approximate and may vary with actual construction, and all floor plans and development plans are subject to change. The furnishings and décor illustrated are not included with the purchase of the Unit. See Prospectus for additional information regarding what is offered with the Unit and the calculation of the Unit square footage and dimensions. Terraces depicted are for illustration only and may not reflect the final terrace design. The Developer reserves the right to modify, without notice, the size, dimension, and configuration of the terraces based upon the final architectural and engineering specifications.





SLS LUX™
BRICKELL

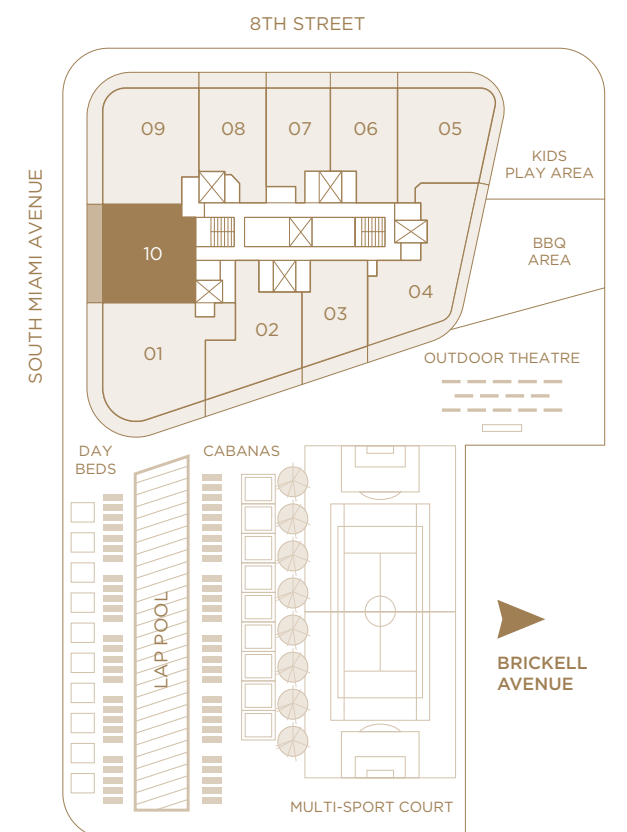


RESIDENCE 10

2 BEDROOMS & DEN / 2 BATHS

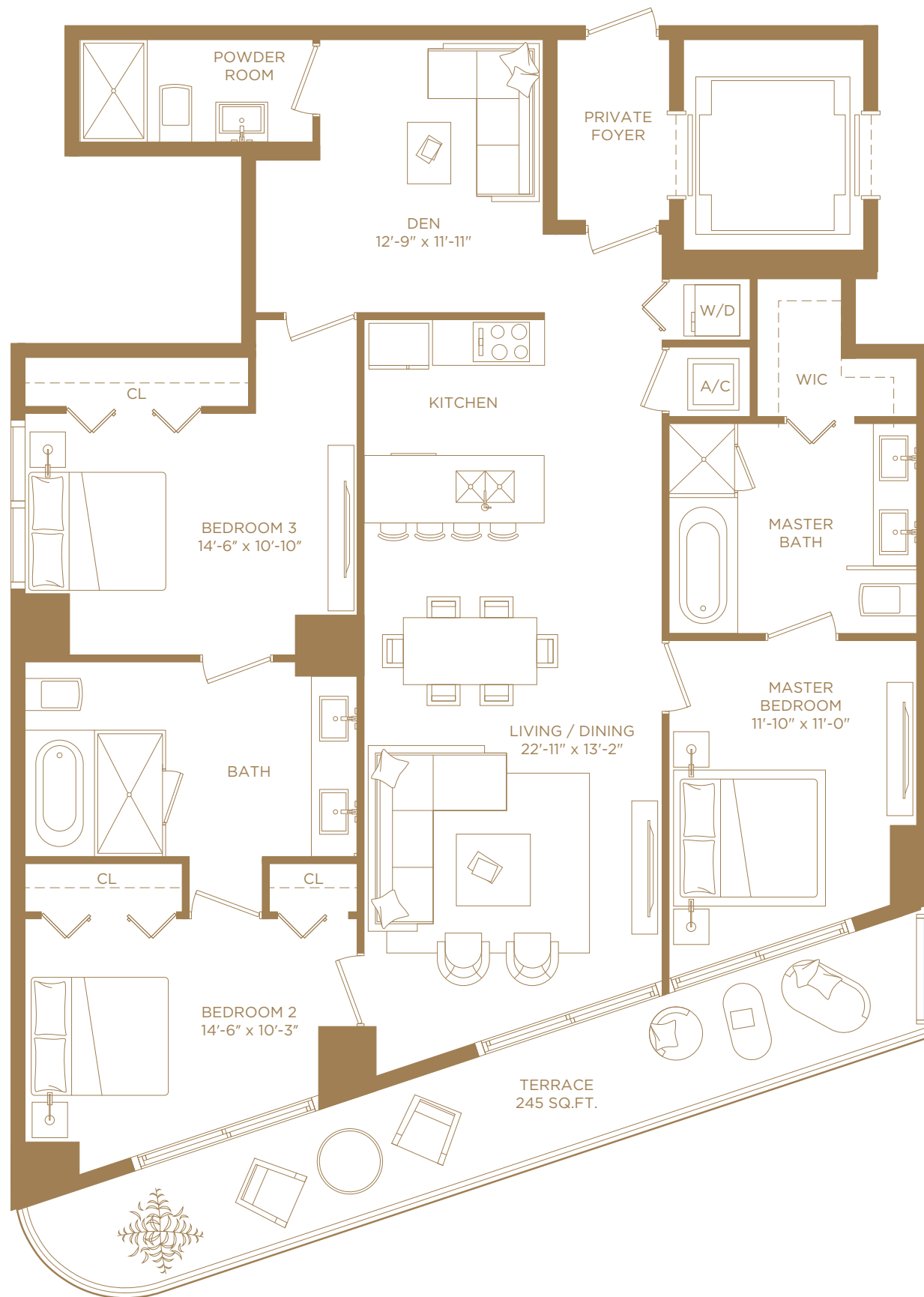
A/C INTERIOR AREA	1,413 SQ. FT.	131.27 SQ. M.
TERRACE AREA	226 SQ. FT.	20.99 SQ. M.
TOTAL RESIDENCE	1,639 SQ. FT.	152.26 SQ. M.

There are various methods for calculating the square footage of a Unit and depending on the method of calculation, the quoted square footage of a Unit in advertising materials may vary from the square footage of a Unit as stated or described in the Prospectus and the Declaration. The dimensions in the Unit shown in these floor plans have been calculated from the exterior boundaries of the exterior walls to the centerline of interior demising walls, including common elements such as structural walls and other interior structural components of the building and in fact vary from the dimensions that would be determined by using the description and definition of the "Unit" set forth in the Prospectus and the Declaration. For your reference, the area of the Unit, determined in accordance with the Unit boundaries as defined in the Prospectus and the Declaration are less than the square footage reflected here. The configuration and use of space or the floor plan design may vary from that in the Prospectus and Declaration because the Developer has reserved the right in the Prospectus to make design, dimension, specification, and plan changes at any time, in the Developer's discretion, without notice to Unit buyers. The measurements of room set forth on this floor plan are generally taken at the greatest points of each given room (as if the room were a perfect rectangle) without regard for any cutouts. Accordingly, the area of the actual room will typically smaller than the product obtained by multiplying the stated length times width. All dimensions are approximate and may vary with actual construction, and all floor plans and development plans are subject to change. The furnishings and décor illustrated are not included with the purchase of the Unit. See Prospectus for additional information regarding what is offered with the Unit and the calculation of the Unit square footage and dimensions. Terraces depicted are for illustration only and may not reflect the final terrace design. The Developer reserves the right to modify, without notice, the size, dimension, and configuration of the terraces based upon the final architectural and engineering specifications.





SLS LUX™
BRICKELL

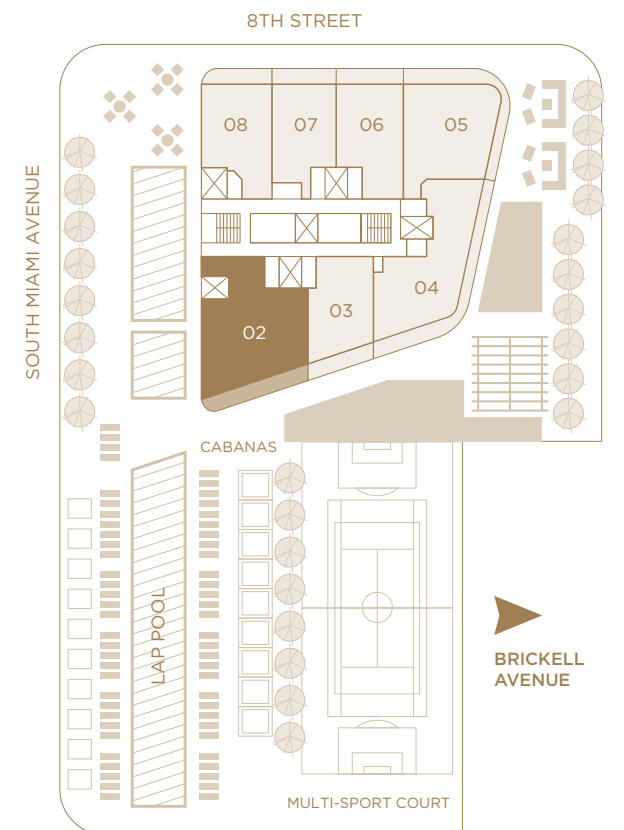


RESIDENCE 02A

3 BEDROOMS & DEN / 2 1/2 BATHS

A/C INTERIOR AREA	1,705 SQ. FT.	158.40 SQ. M.
TERRACE AREA	245 SQ. FT.	22.76 SQ. M.
TOTAL RESIDENCE	1,950 SQ. FT.	181.16 SQ. M.

There are various methods for calculating the square footage of a Unit and depending on the method of calculation, the quoted square footage of a Unit in advertising materials may vary from the square footage of a Unit as stated or described in the Prospectus and the Declaration. The dimensions in the Unit shown in these floor plans have been calculated from the exterior boundaries of the exterior walls to the centerline of interior demising walls, including common elements such as structural walls and other interior structural components of the building and in fact vary from the dimensions that would be determined by using the description and definition of the "Unit" set forth in the Prospectus and the Declaration. For your reference, the area of the Unit, determined in accordance with the Unit boundaries as defined in the Prospectus and the Declaration are less than the square footage reflected here. The configuration and use of space or the floor plan design may vary from that in the Prospectus and Declaration because the Developer has reserved the right in the Prospectus to make design, dimension, specification, and plan changes at any time, in the Developer's discretion, without notice to Unit buyers. The measurements of room set forth on this floor plan are generally taken at the greatest points of each given room (as if the room were a perfect rectangle) without regard for any cutouts. Accordingly, the area of the actual room will typically smaller than the product obtained by multiplying the stated length times width. All dimensions are approximate and may vary with actual construction, and all floor plans and development plans are subject to change. The furnishings and décor illustrated are not included with the purchase of the Unit. See Prospectus for additional information regarding what is offered with the Unit and the calculation of the Unit square footage and dimensions. Terraces depicted are for illustration only and may not reflect the final terrace design. The Developer reserves the right to modify, without notice, the size, dimension, and configuration of the terraces based upon the final architectural and engineering specifications.





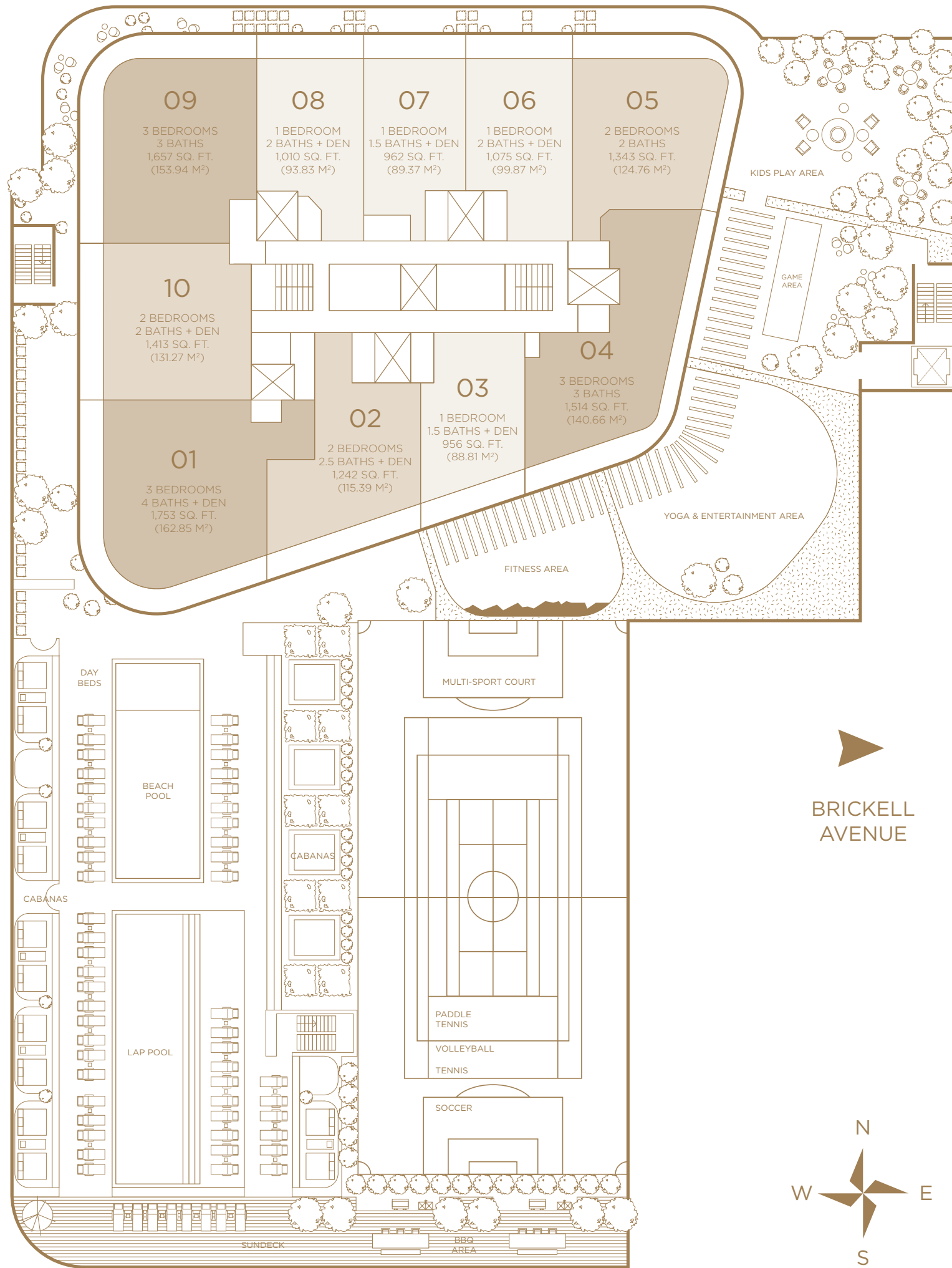
SLS LUX™
BRICKELL

BRICKELL
CITY CENTRE

SOUTH MIAMI AVENUE

8TH STREET

BRICKELL
AVENUE



KEY PLAN

AMENITY DECK / TYPICAL FLOOR

There are various methods for calculating the square footage of a Unit and depending on the method of calculation, the quoted square footage of a Unit in advertising materials may vary from the square footage of a Unit as stated or described in the Prospectus and the Declaration. The dimensions in the Unit shown in these floor plans have been calculated from the exterior boundaries of the exterior walls to the centerline of interior demising walls, including common elements such as structural walls and other interior structural components of the building and in fact vary from the dimensions that would be determined by using the description and definition of the "Unit" set forth in the Prospectus and the Declaration. For your reference, the area of the Unit, determined in accordance with the Unit boundaries as defined in the Prospectus and the Declaration are less than the square footage reflected here. The configuration and use of space or the floor plan design may vary from that in the Prospectus and Declaration because the Developer has reserved the right in the Prospectus to make design, dimension, specification, and plan changes at any time, in the Developer's discretion, without notice to Unit buyers. The measurements of room set forth on this floor plan are generally taken at the greatest points of each given room (as if the room were a perfect rectangle) without regard for any cutouts. Accordingly, the area of the actual room will typically smaller than the product obtained by multiplying the stated length times width. All dimensions are approximate and may vary with actual construction, and all floor plans and development plans are subject to change. The furnishings and décor illustrated are not included with the purchase of the Unit. See Prospectus for additional information regarding what is offered with the Unit and the calculation of the Unit square footage and dimensions.