

A MODEL

08 LINE

Two bedrooms
Two baths

Living Area	1,384 Sq. Ft.	128.57 M ²
Balcony	130 Sq. Ft.	12.07 M ²
Total	1,514 Sq. Ft.	140.64 M ²



Stated dimensions are measured to the exterior boundaries of the exterior walls and the centerline of interior dividing walls. These dimensions in fact vary from those that would be determined by using the description and definition of the "Unit" set forth in the Declaration (which generally only includes the airspace between the unfurnished interior perimeter walls and excludes interior structural components). All dimensions are approximate, and all floorplans and development plans are subject to change. At closing, the unit conveyed will be based upon the dimension contained in the Declaration.

B MODEL

07 LINE

Two bedrooms
Two baths

Living Area	1,350 Sq. Ft.	125.42 M ²
Balcony	122 Sq. Ft.	11.33 M ²
Total	1,472 Sq. Ft.	136.75 M ²



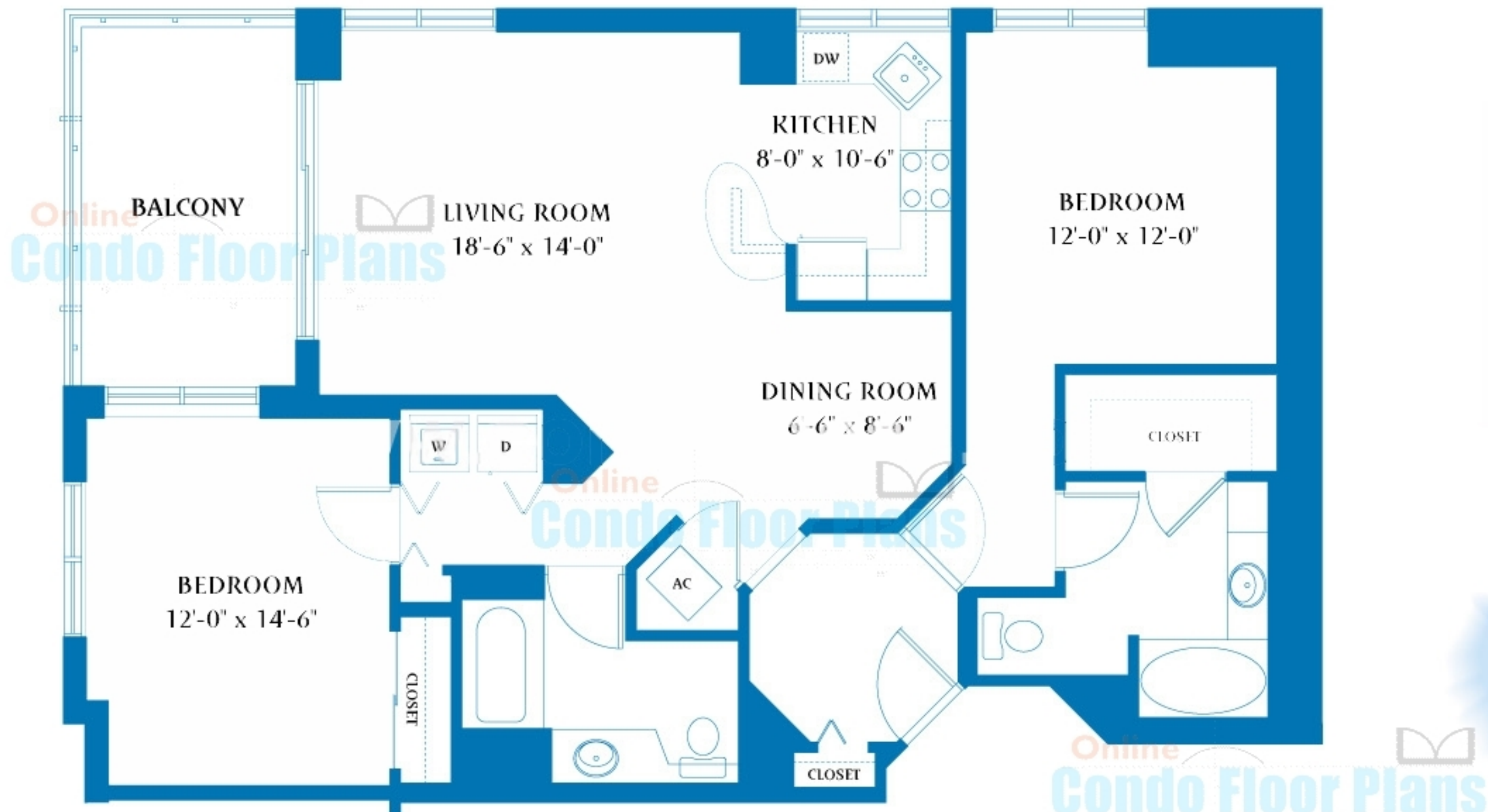
Stated dimensions are measured to the exterior boundaries of the exterior walls and the centerline of interior dividing walls. These dimensions in fact vary from those that would be determined by using the description and definition of the "Unit" set forth in the Declaration (which generally only includes the airspace between the unfurnished interior perimeter walls and excludes interior structural components). All dimensions are approximate, and all floorplans and development plans are subject to change. At closing, the unit conveyed will be based upon the dimension contained in the Declaration.

C MODEL

01, 02, 13 & 14 LINES

Two bedrooms
Two baths

Living Area	1,262 Sq. Ft.	117.24 M ²
Balcony	122 Sq. Ft.	11.33 M ²
Total	1,384 Sq. Ft.	128.57 M ²



Stated dimensions are measured to the exterior boundaries of the exterior walls and the centerline of interior dividing walls. These dimensions in fact vary from those that would be determined by using the description and definition of the "Unit" set forth in the Declaration (which generally only includes the airspace between the unfurnished interior perimeter walls and excludes interior structural components). All dimensions are approximate, and all floorplans and development plans are subject to change. At closing, the unit conveyed will be based upon the dimension contained in the Declaration.

D MODEL

06 & 09 LINES

Two bedrooms
Two baths

Living Area	1,127 Sq. Ft.	104.70 M ²
Balcony	94 Sq. Ft.	8.73 M ²
Total	1,221 Sq. Ft.	113.43 M ²



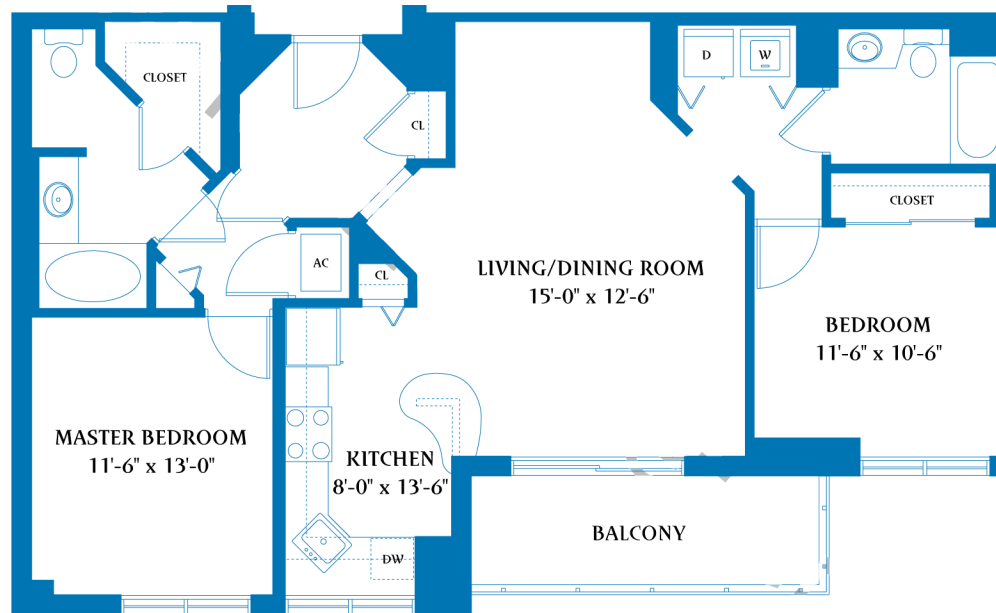
Stated dimensions are measured to the exterior boundaries of the exterior walls and the centerline of interior dividing walls. These dimensions in fact vary from those that would be determined by using the description and definition of the "Unit" set forth in the Declaration (which generally only includes the airspace between the unfurnished interior perimeter walls and excludes interior structural components). All dimensions are approximate, and all floorplans and development plans are subject to change. At closing, the unit conveyed will be based upon the dimension contained in the Declaration.

E MODEL

04 & 11 LINES

Two bedrooms
Two baths

Living Area	1,084 Sq. Ft.	100.71 M ²
Balcony	94 Sq. Ft.	8.73 M ²
Total	1,178 Sq. Ft.	109.44 M ²



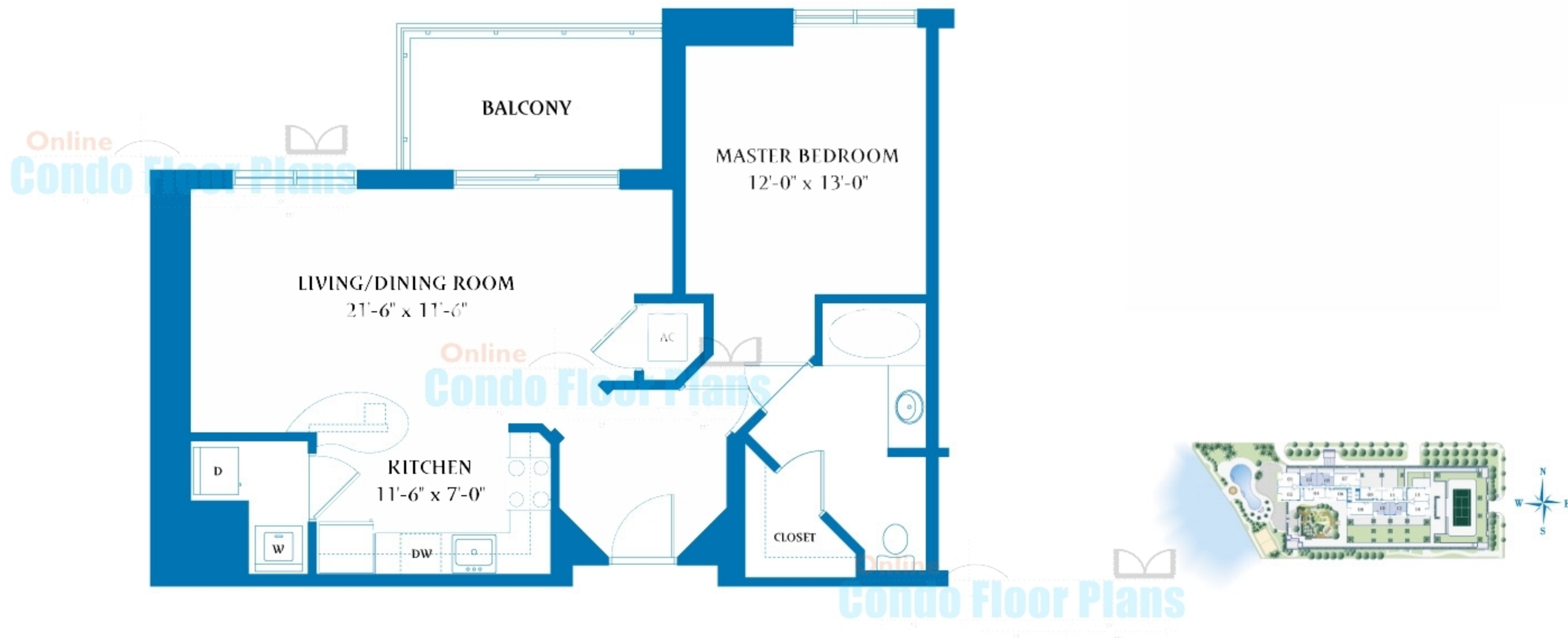
Stated dimensions are measured to the exterior boundaries of the exterior walls and the centerline of interior bearing walls. These dimensions in fact vary from those that would be determined by using the description and definition of the "Unit" set forth in the Declaration (which generally only includes the airspace between the unfinished interior perimeter walls and excludes interior structural components). All dimensions are approximate, and all floor plan development plans are subject to change. As closing, the unit conveyed will be based upon the dimension contained in the Declaration.

G MODEL

03 & 12 LINES
(05 & 10 LINES, 793 SQ. FT.)

One bedroom
One bath

Living Area	806 Sq. Ft.	74.88 M ²
Balcony	99 Sq. Ft.	9.20 M ²
Total	905 Sq. Ft.	84.08 M ²



Stated dimensions are measured to the exterior boundaries of the exterior walls and the centerline of interior dividing walls. These dimensions in fact vary from those that would be determined by using the description and definition of the "Unit" set forth in the Declaration (which generally only includes the airspace between the unfurnished interior perimeter walls and excludes interior structural components). All dimensions are approximate, and all floorplans and development plans are subject to change. At closing, the unit conveyed will be based upon the dimension contained in the Declaration. Floorplan varies on the 05 and 10 lines.